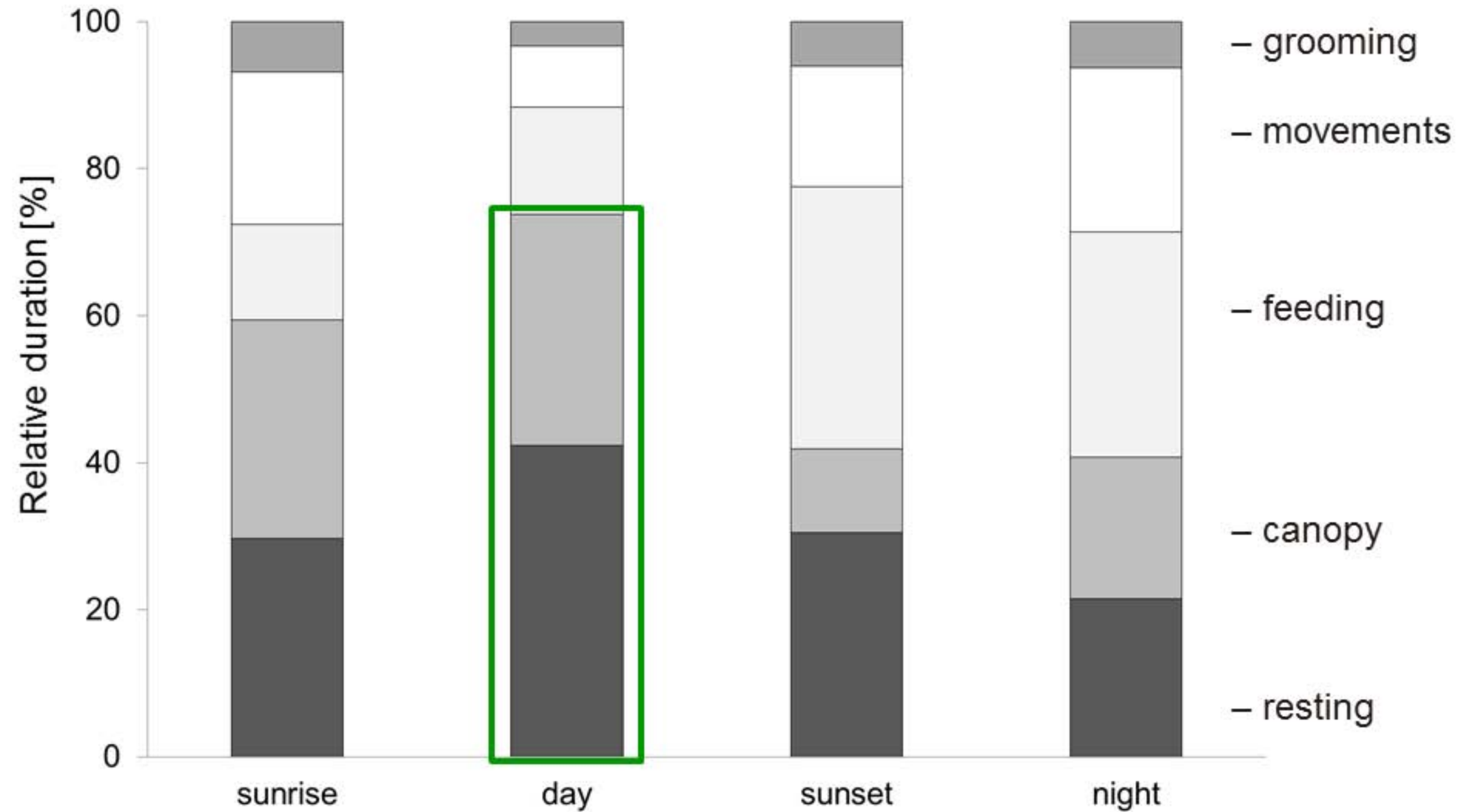


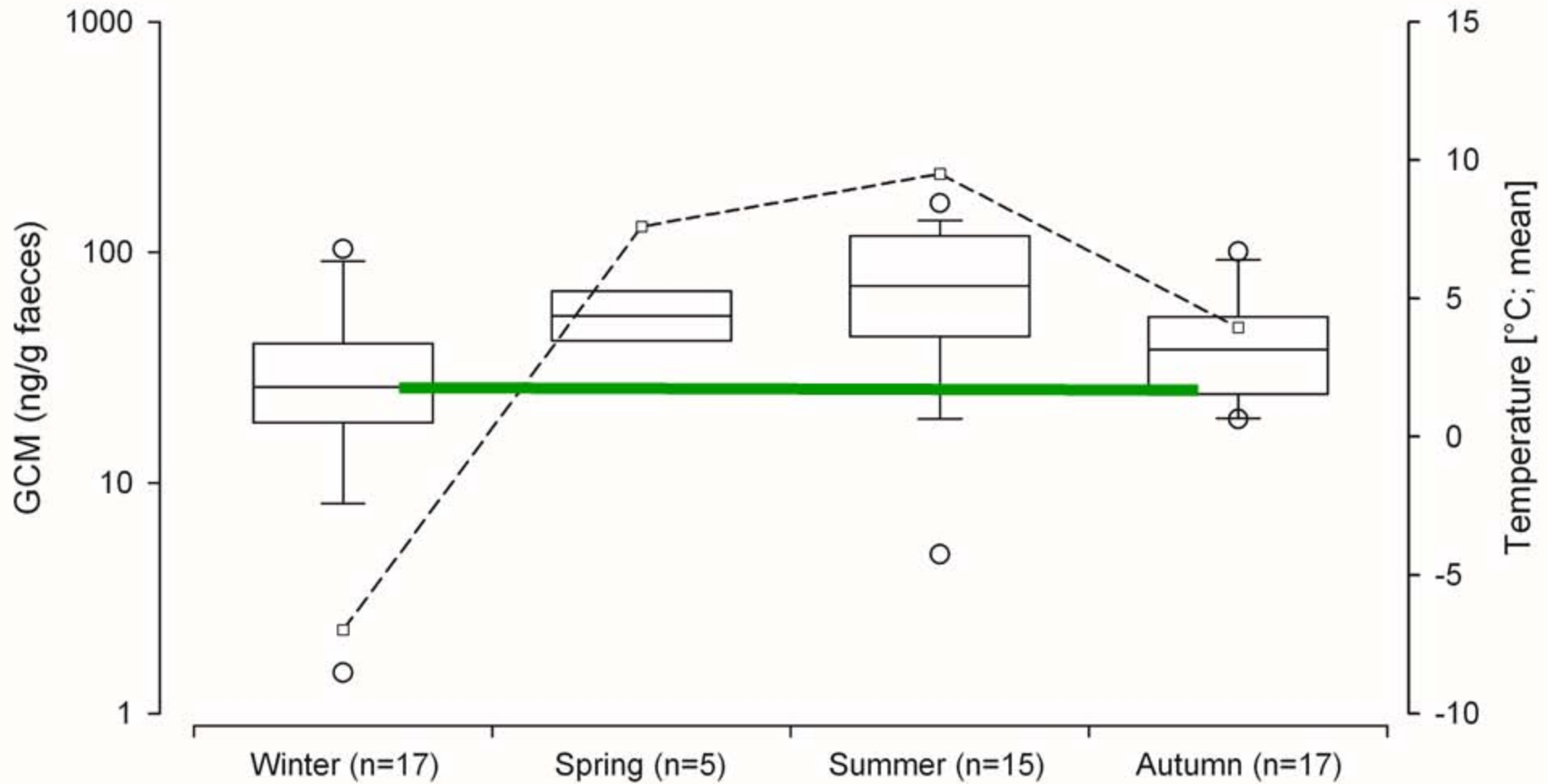
# Impacts of winter sport and recreational activities on the mountain hare (*Lepus timidus*)

Alparc, 4<sup>th</sup> March 2016, Lescheraines, Maik Rehnus

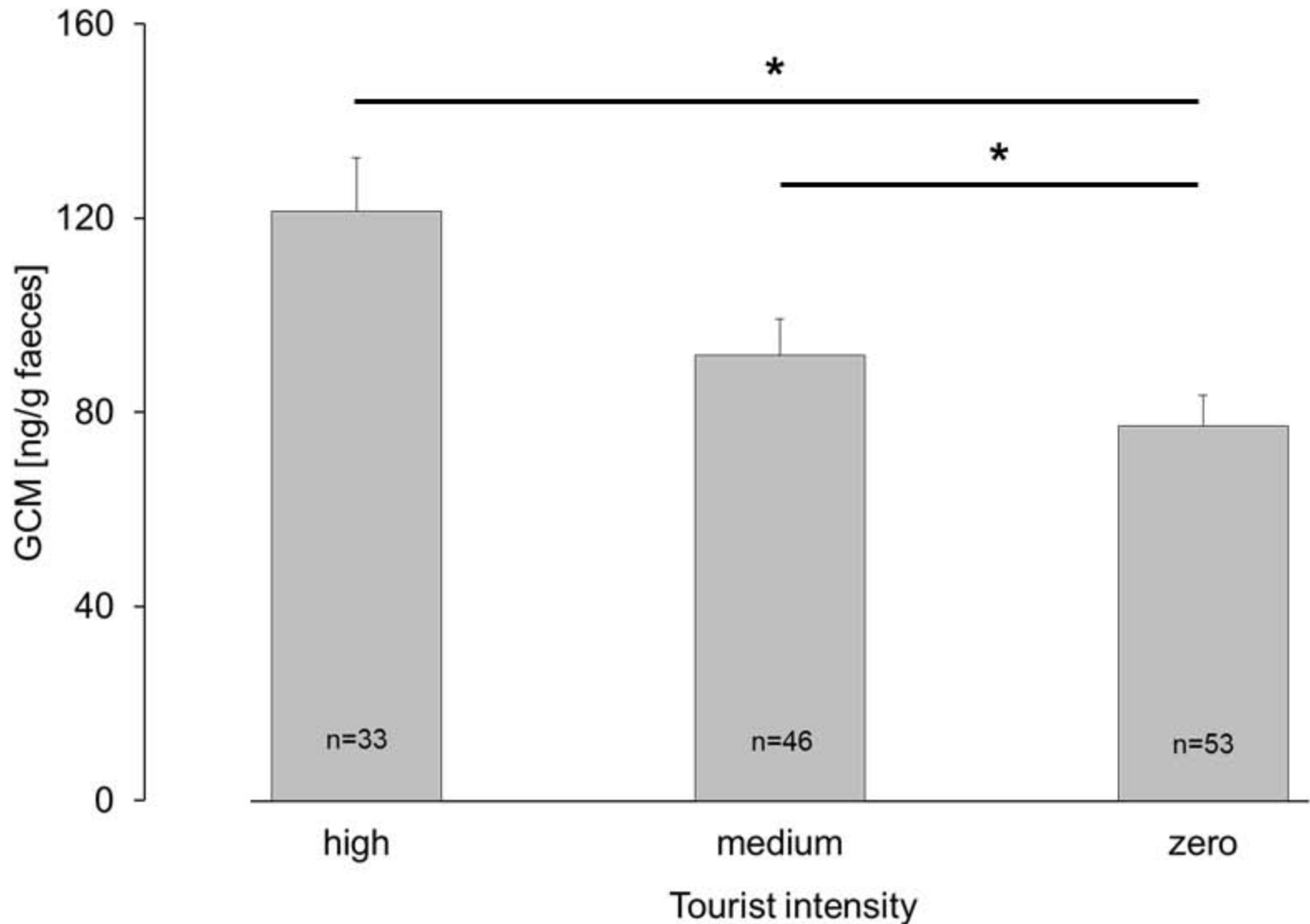
# The 24-hour cycle



# Reduced metabolic rate in winter

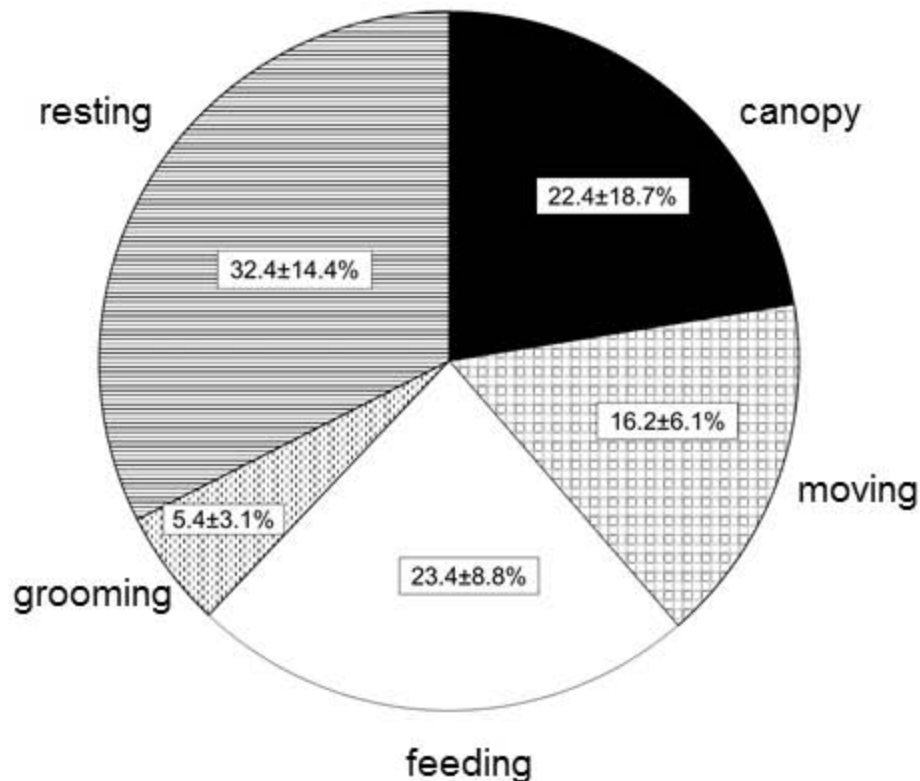


# Glucocorticoid metabolites (GCM) in areas with different tourist intensities during winter



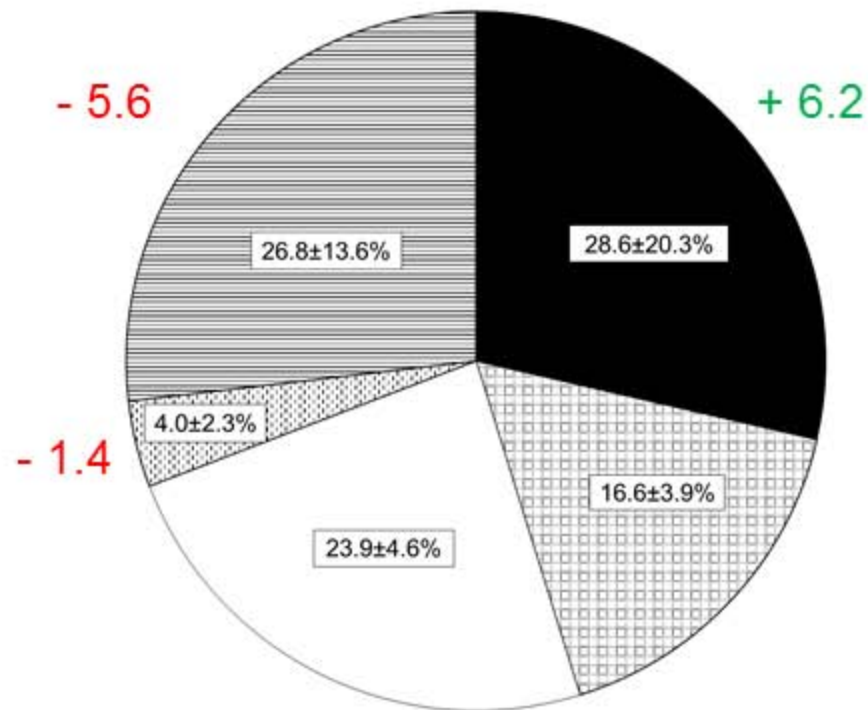
# Predator challenge experiments

## Control hares



2,60 ± 0,36 MJ day<sup>-1</sup>

## Stressed hares



3,18 ± 0,29 MJ day<sup>-1</sup>



PARC  
NAZIUNAL  
SVIZZER



vetmeduni  
vienna



Universität für Bodenkultur Wien  
University of Natural Resources  
and Applied Life Sciences, Vienna

We thank the Swiss National Park for granting permission to conduct the study; all helpers from Natur- und Tierpark Goldau for their support in conducting the experiment; Edith Klobetz-Rassam (Department of Biomedical Sciences/Biochemistry, University of Veterinary Medicine, Vienna) for assistance in the laboratory, the Bristol Foundation for financial support. The animal experiments were conducted with the permission of the Veterinary Office of the Urkantone in Switzerland (SZ-03/11).

**Thank you for your attention!**